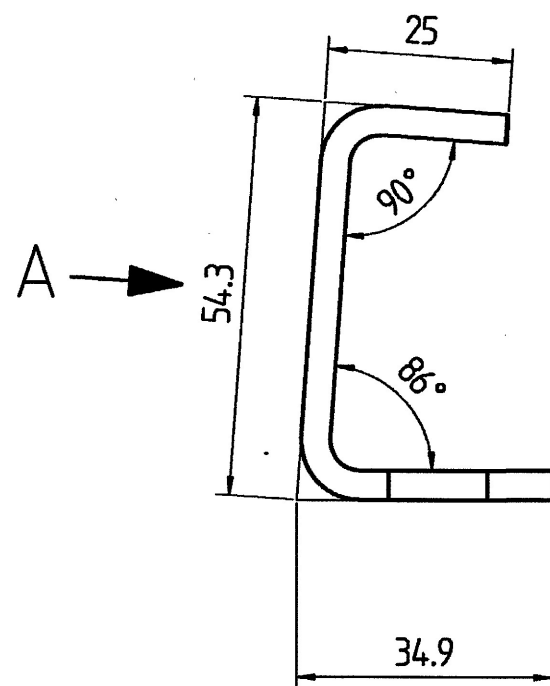
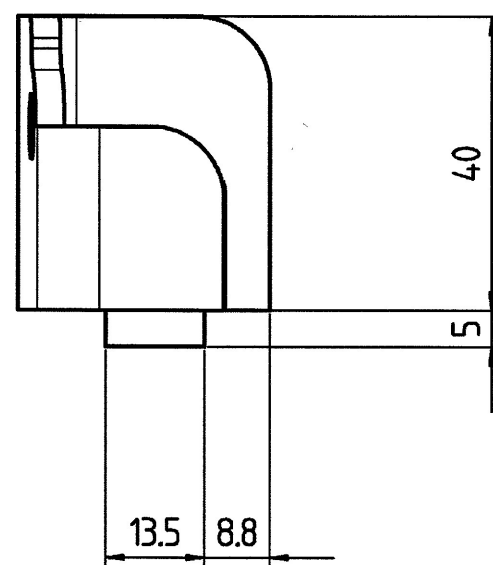
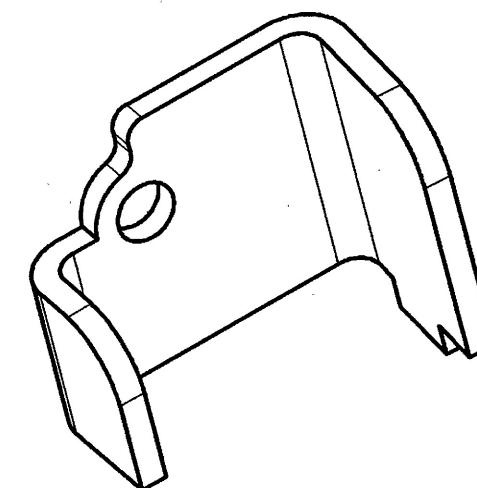
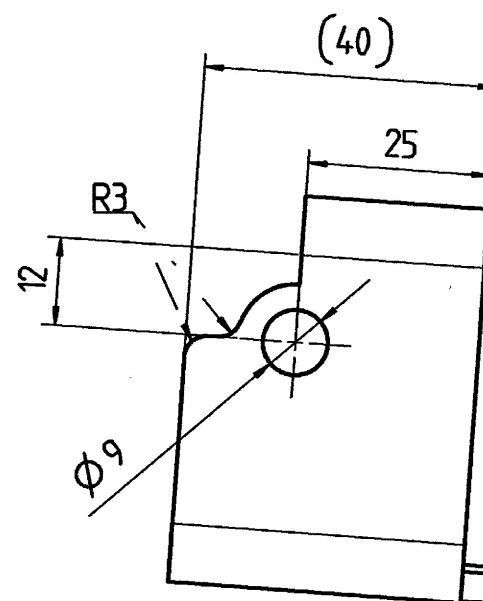


PŘEKLAD
12.12.2019
PROVEDLA
BRANDOVÁ EVA
Eva Brandová



následující pohled A
Following view A



Tloušťka plechu: 4 mm
Poloměry bez rozměrů: R = 10
V poloměrech: R = 4

NOTE :

- Metal sheet thickness : 4 mm
- Radii without dimension : R = 10
- Inside bend radii R = 4

ARCHIV
12.12.2019

0

ZM/19/00796

+0.5
-0.5

Condition at time of delivery

de-scaled (degree of purity SA 2 1/2 acc. ISO 8501-1)	X
without burrs acc. WN 11310	
Permissible top-end rounding during flame cutting (also positive bead acc. WN 10572)	
oil-free / free of grease	
oiled	
oiling permissible	X
Indicate the required condition at time of delivery with an X.	

FL03-00132.prt

First angle projection



00 Creation T126783

General tolerance (GT) in mm
Size range

	> 30	> 120	> 400	> 1000
≤ 30	≤ 120	≤ 400	≤ 1000	

GT fine

L	0,2	0,5	0,8	2	4
≤ 1	0,1	0,2	0,4	1	2

Lengths (L) and angle (∠) = ±GT

Tolerance Symbols ISO 1101

- roundness = 1/2σ-Tol.
- straightness/flatness = AT
- ⊙ concentricity/run out = AT
- ≡ symmetry = AT
- // parallelism = AT
- ⊕ position = AT

Languages:
EN;FR

Index alteration Change no Fit Toler.

PPAP-Level 1 / WN 50020

Inspection dim. Aux.dim. ()

Date Name

Drawn 12.09.2019 T.Lorenc

Checked 17.09.2019 O.Frechet

Auth'd 17.09.2019 A.TOUZE

M.check. 01.10.2019 V.Defrance

Material: S235JR
following EN10025-2

Weight: in kg

0.1

Title:

stop

right tow tractor

Prod.

Scale

1:1

Sheet:

1

of:

1

Tolerance řezání laserem

LASER cutting tolerances

NOTE : min cutting radius without dimensions R = 1 mm unless otherwise specified

≤ 30	30 < ≤ 120	120 < ≤ 400	400 < ≤ 1000	1000 <
± 0,5	± 0,8	± 1,0	± 1,5	± 2,0

+0.5
-0.5

Confidential document
Refer to protection notice ISO 16016

Released

3715500/D2D/001/00

a3

11914015006V00EN0001